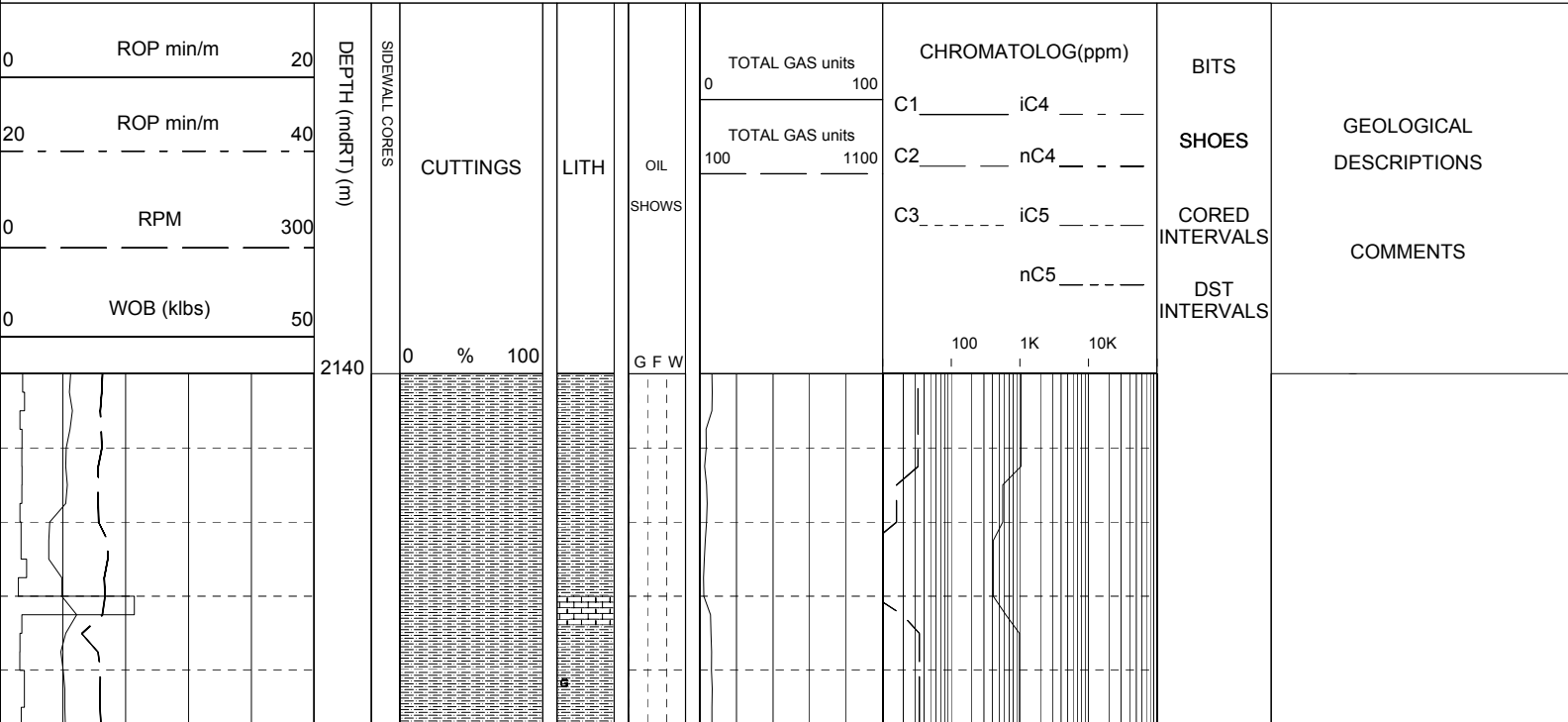


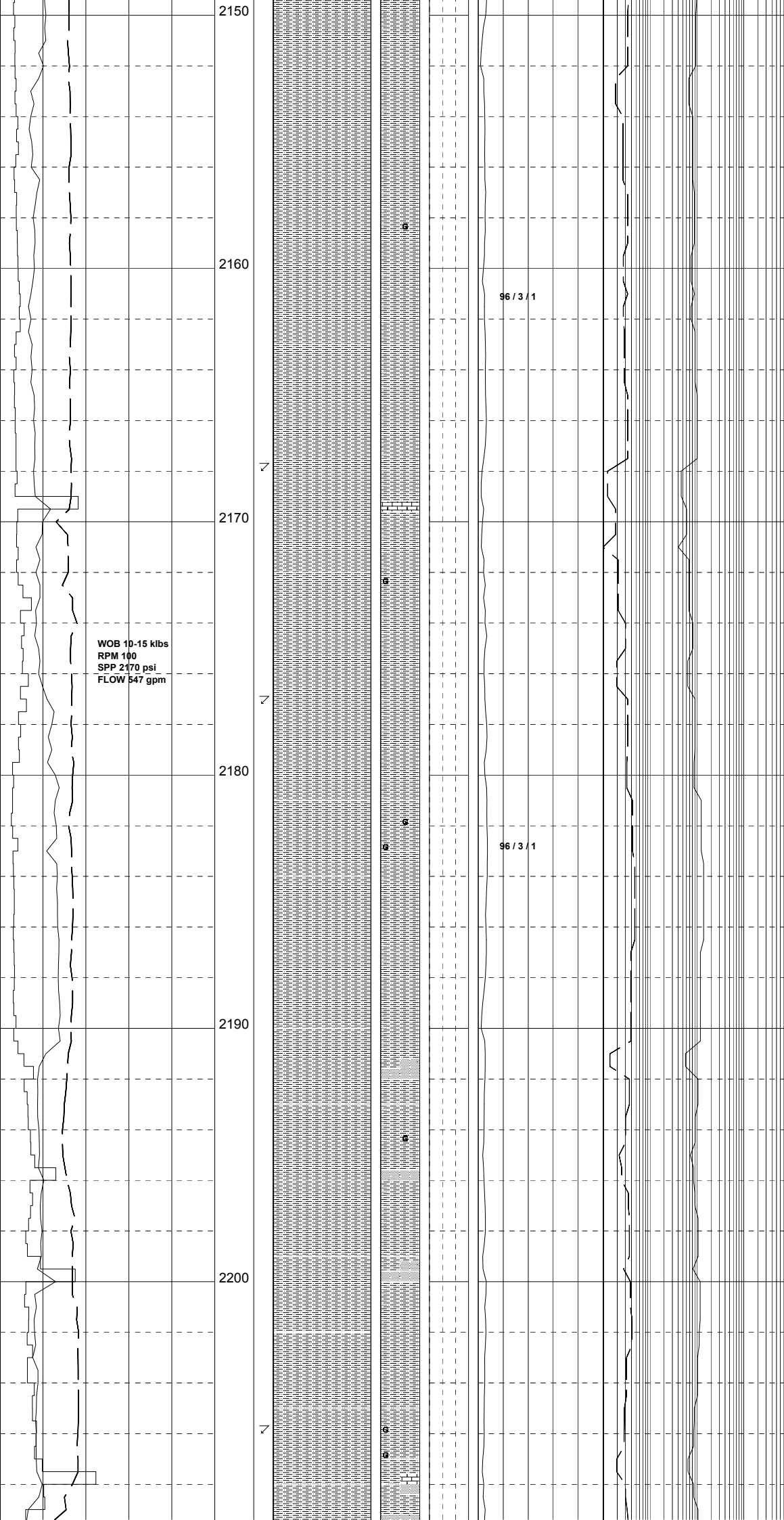
COMPANY	ORIGIN ENERGY ORIGIN ENERGY		SPUD DATE	19-09-2005
RIG	CENTURY 7		TD DATE	TD DATE
AREA	PEP 154		TD DRILLER	TD DRILLER
STATE/COUNTRY	VICTORIA, AUSTRALIA		TD WIRELINE	TD WIRELINE
LOCATION	38ø29'31.96"S	142ø44'46.66"E	LOGGED FROM	LOGGED FROM
GROUND LVL	46.17m		LOGGED TO	TD WIRELINE
RT HEIGHT	5.3m		FINAL STATUS	STATUS
DEPTH REF	ROTARY TABLE			

WELL CONFIGURATION				LOGGING ENGINEERS		SCALE 1/ 200
BIT SIZE	HOLE DEPTH (m)	CASING SIZE	CASING DEPTH (m)	Rory McLellan		
311mm	551m	245mm	544.5m	Aroop Dev		
216mm	OH TD			Andrew Philps		

SYMBOLS		ABBREVIATIONS		MUD DATA	
<ul style="list-style-type: none"> NEW BIT RUN NEW CORE BIT RUN CASING SHOE LINER HANGER MUD LOSS / MUD GAIN Recovered SIDEWALL CORES Not Recovered 	<ul style="list-style-type: none"> CORED INTERVAL DST INTERVAL 	<ul style="list-style-type: none"> NO SHOW WEAK SHOW FAIR SHOW GOOD SHOW 	<ul style="list-style-type: none"> NB NEW BIT NCB NEW CORE BIT RRB RE-RUN BIT CS CASING SHOE SWC SIDE WALL CORE EL ELECTRIC LOG WOB WEIGHT ON BIT RPM REVOLUTIONS/MINUTE SPP STAND PIPE PRESSURE SPM STROKES/MINUTE CR CIRCULATED RETURNS PR POOR RETURNS NR NO RETURNS TG TRIP GAS CG CONNECTION GAS WTG WIPER TRIP GAS SG SWAB GAS 	<ul style="list-style-type: none"> DS DIRECTIONAL SURVEY WT WIPER TRIP POOH PULL OUT OF HOLE RIH RUN IN HOLE AZI AZIMUTH INCL INCLINATION LCM LOST CIRCULATION MATERIAL DC DEPTH CORRECTION DST DRILL STEM TEST RMG REAMING ML MUD LOSSES FR FLOW RATE FC FLOW CHECK BR BIT RUN MMCFD Million Cubic Feet/Day U UNITS OF GAS FLUOR FLUORESCENCE 	<ul style="list-style-type: none"> MW MUD WEIGHT sg(kg/l) MG MUD GRADIENT KPA/mt FV FLUID VISCOSITY sec PV PLASTIC VISCOSITY Cp YP YIELD POINT lb/cf2 GeI GEL STRENGTH lb/cf2 pH ACIDITY F FILTRATE cm3/30 Ck CAKE THICKNESS cm/32 S SALINITY kg/m3 SD SAND CONTENT % O OIL CONTENT % WL WATER LOSS cm3/30 SoI SOLIDS CONTENT % Cl CHLORIDES KCl POTASSIUM CHLORIDE mg/l Ca CALCIUM CONTENT

CLAYSTONE	MEDIUM SST	LIMESTONE	GYPSUM	TUFF	FERRUGINOUS	CALCAREOUS	GLAUCONITE	MICROFOSSILS
SILTSTONE	FINE SANDSTONE	DOLOMITIC LIME	HALITE	VOLCANIC ROCK	FORAMINIFERA	DOLOMITIC	MICACEOUS	FOSSILS
CONGLOMERAT	VF SANDSTONE	DOLOMITE	CEMENT	IGNEOUS ROCK	BRYOZOA	CARBONACEOUS	PYRITE	LITHICS
COARSE SST	BRECCIA	COAL	CALCARENITE	METAMORPHICS	FELDSPAR	CHERTY	BROKEN FOSSILS	SIDERITE





SILTSTONE:pred bnsh gry-lt brn,com mott grn,arg grd to CLYST,occ vf aren,loc com glauc i/p,rr carb mat i/p,gen frm-mod hd,sli calc i/p,gen sil,sbfiss-sbbiky.

SURVEY @ 2168m: 3.0°

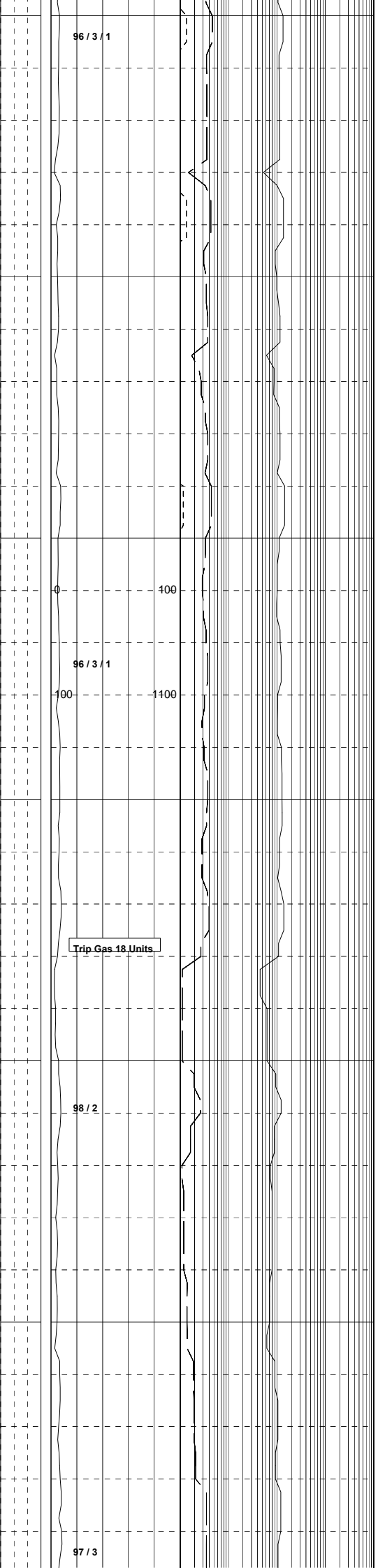
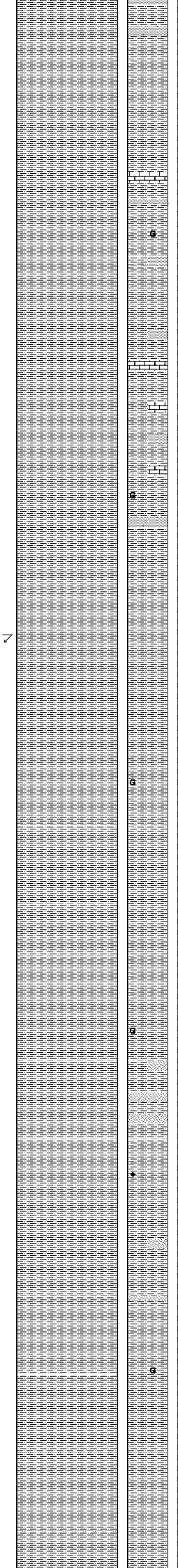
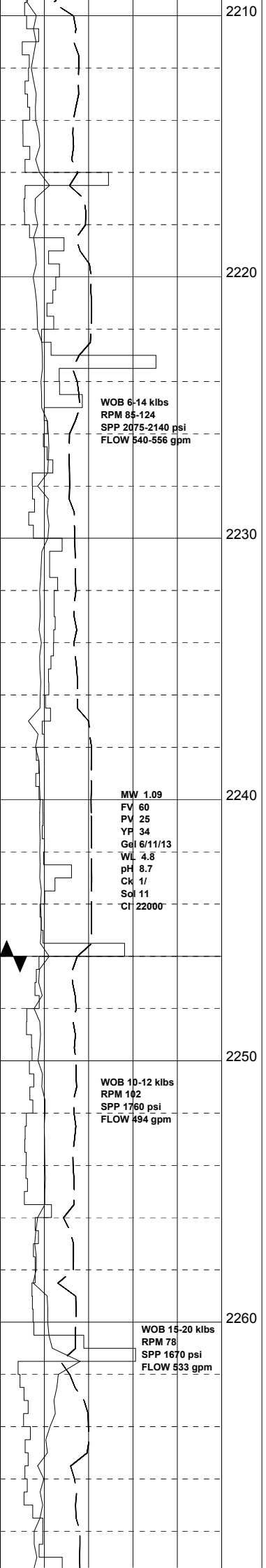
SURVEY @ 2177m: 2.5°

SILTSTONE:pred bnsh gry-lt brn,com mott grn,arg,occ vf aren,loc com glauc i/p, gen frm,gen sil w/ hd & sil i/p,mnr tr calc i/p,pred sbfiss-sbbiky,occ biky.

SANDSTONE(TR):off wh-v lt gry,vf, w/ srt,sbang-sbrnd,off wh arg mtx,wk sil cmt,fri,v pr-ti vis por,no fluor.

SURVEY @ 2206m: 3.5°

SILTSTONE:pred bnsh gry-lt brn, com mott grn,aren,occ arg,loc com glauc i/p,gen frm,gen sil w/ hd & sil i/p,mnr-



SILTSTONE:med gry-dk gry,med grnsh gry-dk grnsh gry,dom arg,mnr aren,tr carbspks,tr glauc,sft frm,mod hd i/p,sbbiky-sbfiss,amorph.

SURVEY @ 2234m: 3.5°

Wiper Trip @ 2246m

SILTSTONE:med-med dk gry,pred arg,occ aren,micmic,com carb spks,mnr-tr glauc,frm-mod hd i/p,tr pyr nods,sbbiky-sbfiss,tr fiss.

CARBIDE LAG CHECK @ 2257m
THEOR. STKS: 6754
ACTUAL STKS: 7200
HOLE IS 8.0% O.G.

SILTSTONE:med-dk gry,arg,decr carb spks,com grd to CLYST i/p,tr LMST mat,frm-mod hd,sbbiky-sbfiss.

WOB 10-12 klbs
RPM 106
SPP 1860 psi
FLOW 524 gpm

2270

2280

2290

2300

2310

2320

WOB 5-16 klbs
RPM 90-120
SPP 1775-1980 psi
FLOW 505-565 gpm

SURVEY @ 2271m: 3.0°

SILTSTONE: med-dk gry, arg, decr carb spks, com grd to CLYST i/p, tr LMST mat, frm-mod hd, sbbiky-sbfiss.

SILTSTONE: med-med-dk gry, brnsh gry, olv gry i/p, rr grnsh gry, arg, loc com carb spks, glauc, tr wh-off wh v arg liths, fri-mod hd, hd-v hd i/p, sbbiky-sbfiss.

98 / 2

0

100

100

1400

SILTSTONE: med-med-dk gry, brnsh gry, olv gry i/p, rr grnsh gry, arg, loc com carb spks, glauc, tr wh-off wh v arg liths, tr LMST, fri-mod hd, hd-v hd i/p, sbbiky-sbfiss.

SURVEY @ 2299m: xxx°

SILTSTONE: med dk gry-dk gry, med grnsh gry-dk grnsh gry, tr lt gry-off wh, dty wh, arg, com carb spks, fm-mod hd, hd i/p, sbbiky-sbfiss.

98 / 2

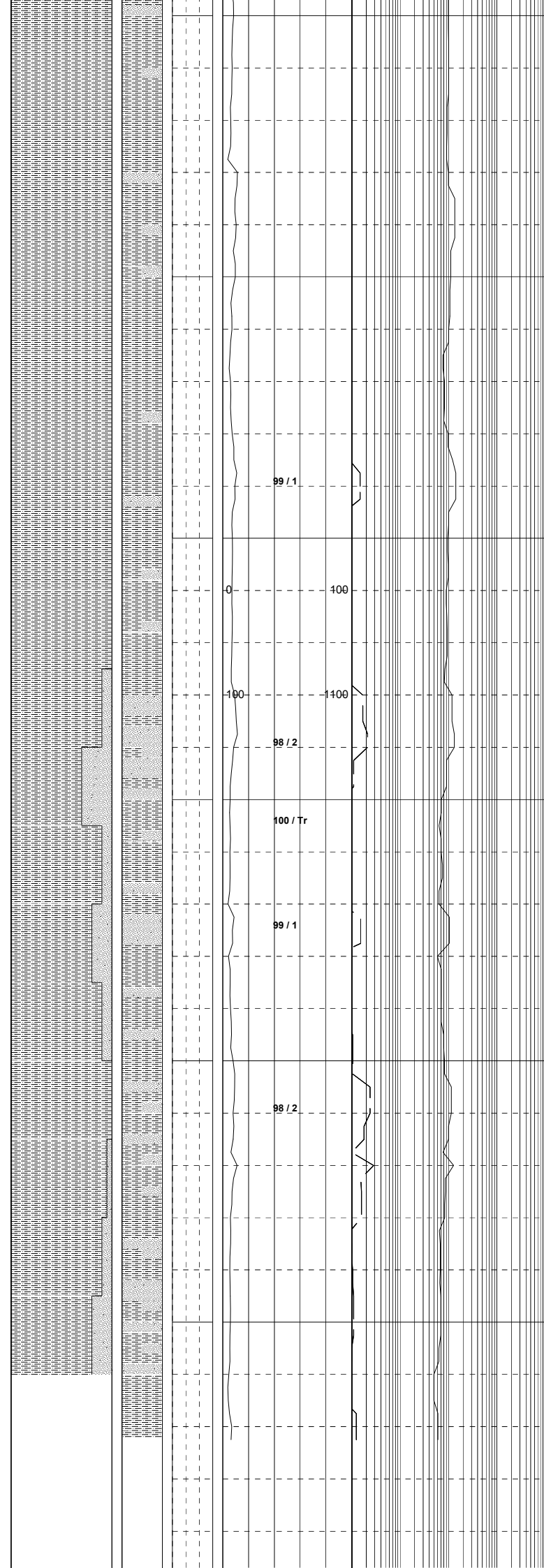
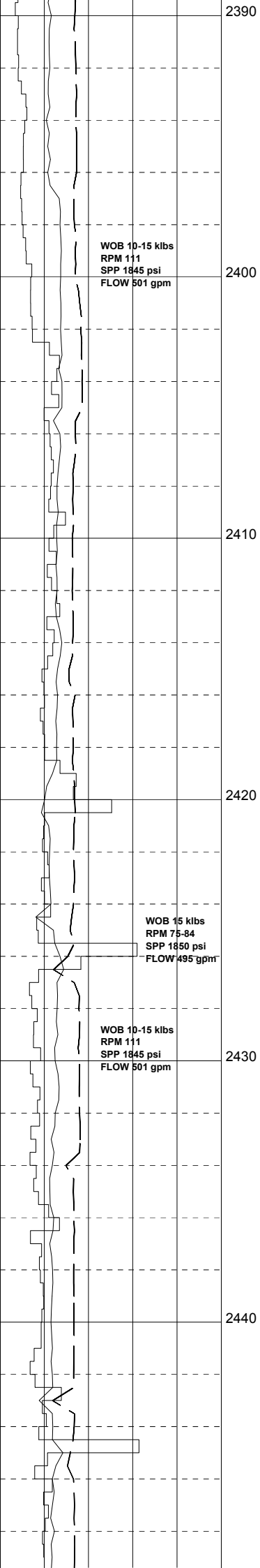
SILTSTONE: med dk-dk gry, dk brnsh gry, dk grnsh gry, arg, com carb spks, com glauc, frm-mod hd, loc hd i/p, sbbiky-sbfiss.

SURVEY @ 2318m: 3.0°

SILTSTONE: med dk-dk gry, dk brnsh gry, dk grnsh gry, arg, com carb spks, com glauc, tr micmic, frm-mod hd, loc hd i/p, sbbiky-sbfiss.

99 / 1

SILTSTONE: med dk-dk gry, dk brnsh gry, dk grnsh gry, arg, mnr-tr carb spks, mnr glauc, tr micmic, frm-mod hd, loc hd i/p, sbbiky-sbfiss.



blky.

SILTSTONE:pl rdsh brn-grysh rd,mnr-
rr olv gry,dk gry,arg grd to CLYST
i/p,v sft-sli frm i/p,pred amorph w/
occ blk aggs.

SILTSTONE:lt-med gry,grysh brn,com
rdsh brn,mnr mott gry & grn i/p,v arg
grd to CLYST,mnr aren i/p,mod calc i/p,
com stky,gen v sft,grysh brn mod frm,
fiss-amorph,com disp.

SANDSTONE:med-dk grysh brn,mnr v lt
brnsh cm,com mott w/ grn & dk liths,
vf,v wl srt,sbang-sbrnd,mod stng calc
cmt,dm arg-sity mtx,com liths & mnr
chlor,com fri-mod frm i/p,occ frm-mod
hd,v pr-ti vis por,no fluor.

SANDSTONE:dk gry,com mott dk gry
brn,vf-occ f,mod wl srt,sbang-
sbrnd,mod calc cmt,dk stly-arg mtx,
rr-tr glauc i/p,v fri-frm i/p,v pr
vis por,no fluor.

SANDSTONE:v dk gry,com mott dk gry-
dk brn,vf-occ f,mod wl srt,sbang-
sbrnd,mod calc cmt,v com dk stly
mtx,rr cln & lse,tr glauc i/p,
fri-mod frm i/p,pr-ti vis por,no
fluor.

SILTSTONE:med-dk grysh brn,mnr tr
rdsh brn,arg & stky i/p,com v aren
grd to vf SST,mod calc,fiss-amorph,
com disp.